

# Nima Negahban

Founder & CEO of Kinetica

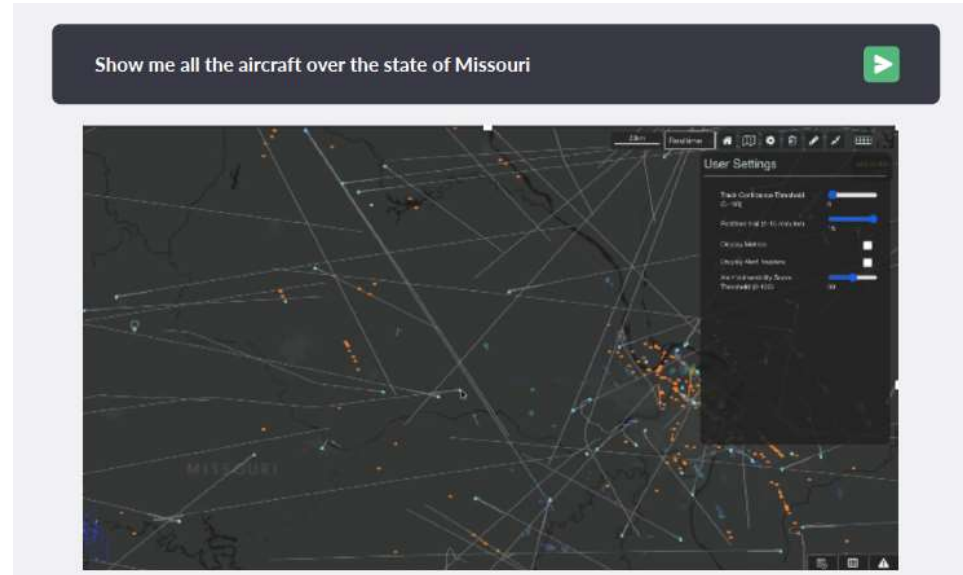
- Kinetica is a real-time database for spatial and time-series analysis
- First ever GPU database, originally created for the DoD in 2009 to track terrorists
- Came out of The Defense Innovation Unit
- Kinetica is used by ABMS, FAA, US Department of State, Space Force, FEMA, & USPS



# Generative AI LLMs + Big Spatial Data

*Ask any question of spatial data using natural language*

- Performance – GPUs accelerate spatial analysis by orders of magnitude
- Accuracy – Fine-tuning of native LLM on spatial syntax
- Integration – seamlessly and securely plug into existing data environment

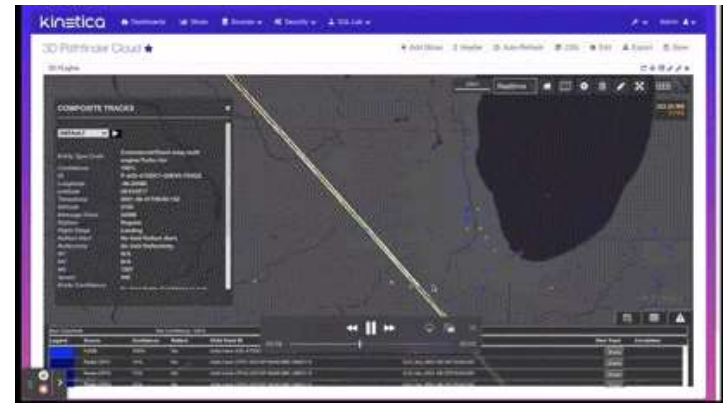


Transforms the way we will interact with geospatial data

# Generative AI Vector Search + Big Spatial Data

*Real-time pattern matching of spatial anomalies*

- Spatial trends from radars, satellites, and communications can be turned into vector embeddings and used to find similar patterns
- GPU architecture allows this to be done in real-time



Transforms the way we will find geospatial patterns