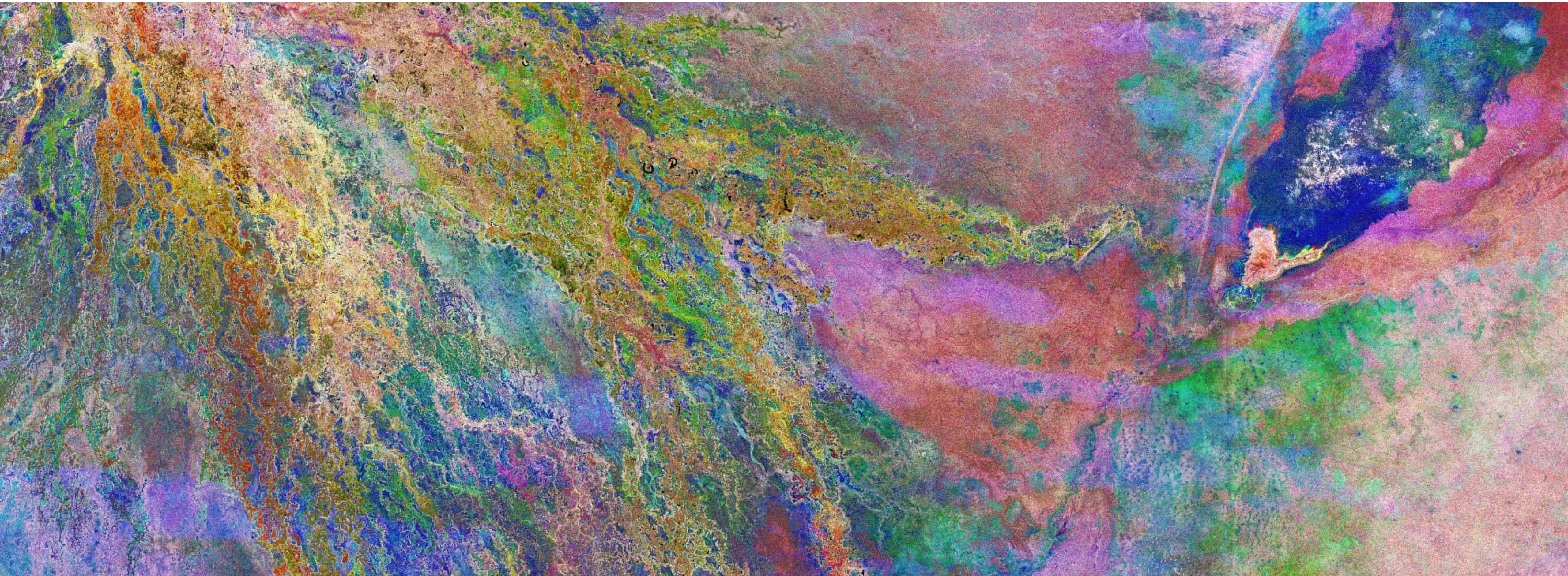


Increasing shared understanding of our world by expanding access to Earth science data.



“The digital universe is currently expanding by some thirty trillion transistors per second, populated by unbounded, if countable, strings of code.”

Analogia by George Dyson

When introducing Radiant.Earth in 2017, Geospatial World reported that there were “around 1,400 satellites orbiting Earth and this number could more than double over the next five years as satellites become smaller, lighter, cheaper and easier to launch.”

[In 2022], they reported there were 4,852 active satellites orbiting the planet as of December 2021 – rather than doubling over five years, the number of satellites more than tripled over four years. When we started, we focused on Earth imagery from drones and satellites. Today, we work with users who need to work with data types beyond imagery, such as vectors, n-dimensional arrays, and point clouds.

<https://radiant.earth/blog/2023/05/say-hello-to-radiant-earth/>

Markets have failed to make critical data available to people who need it to address global issues.

ENERGY & ENVIRONMENT

'Garbage' models and black boxes? The science of climate disaster planning

Scientists warn that the data may be too unreliable to guide the precautions that governments, businesses and retirement fund managers must take in the coming decades.

Politico, March 2021

REPORT

Flying blind: What do investors really know about climate change risks in the U.S. equity and municipal debt markets?

Parker Bolstad, Sadie Frank, Eric Gesick, and David G. Victor · Wednesday, September 16, 2020

Brookings, September 2020

Cervest, a London 'climate intelligence' firm hailed by the Government as one of the UK's 10 most "exciting" AI firms just three months ago has gone bust with staff left unpaid, the Standard can reveal.

All of Cervest's more than 100 staff have lost their jobs. Its 71 UK employees haven't been paid since April.

Evening Standard, June 2023

As private weather forecasting takes off, who is left behind?

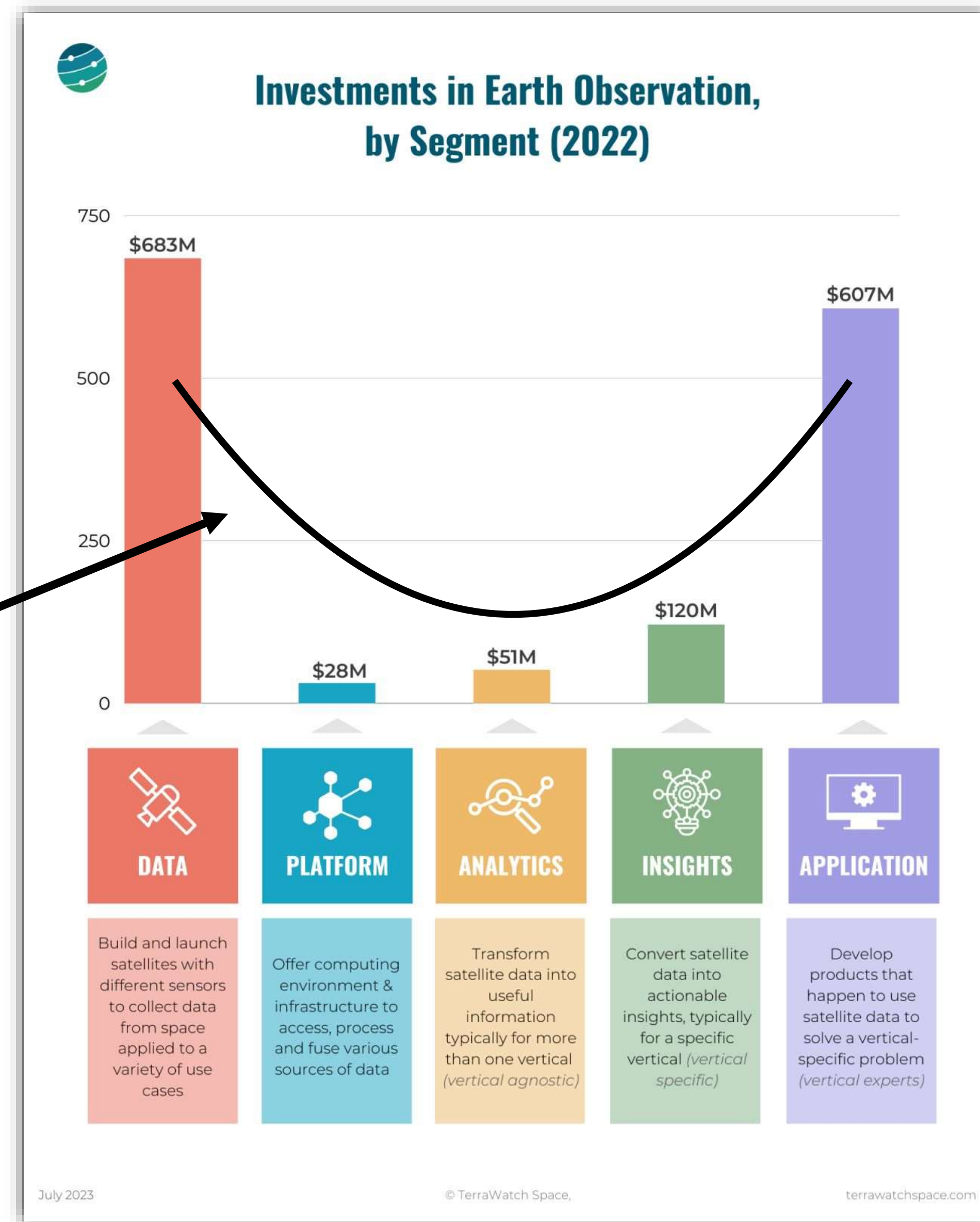
As climate change intensifies extreme weather, cities and companies are paying for private forecasting. But what about the places that can't afford it?

Grist, May 2022

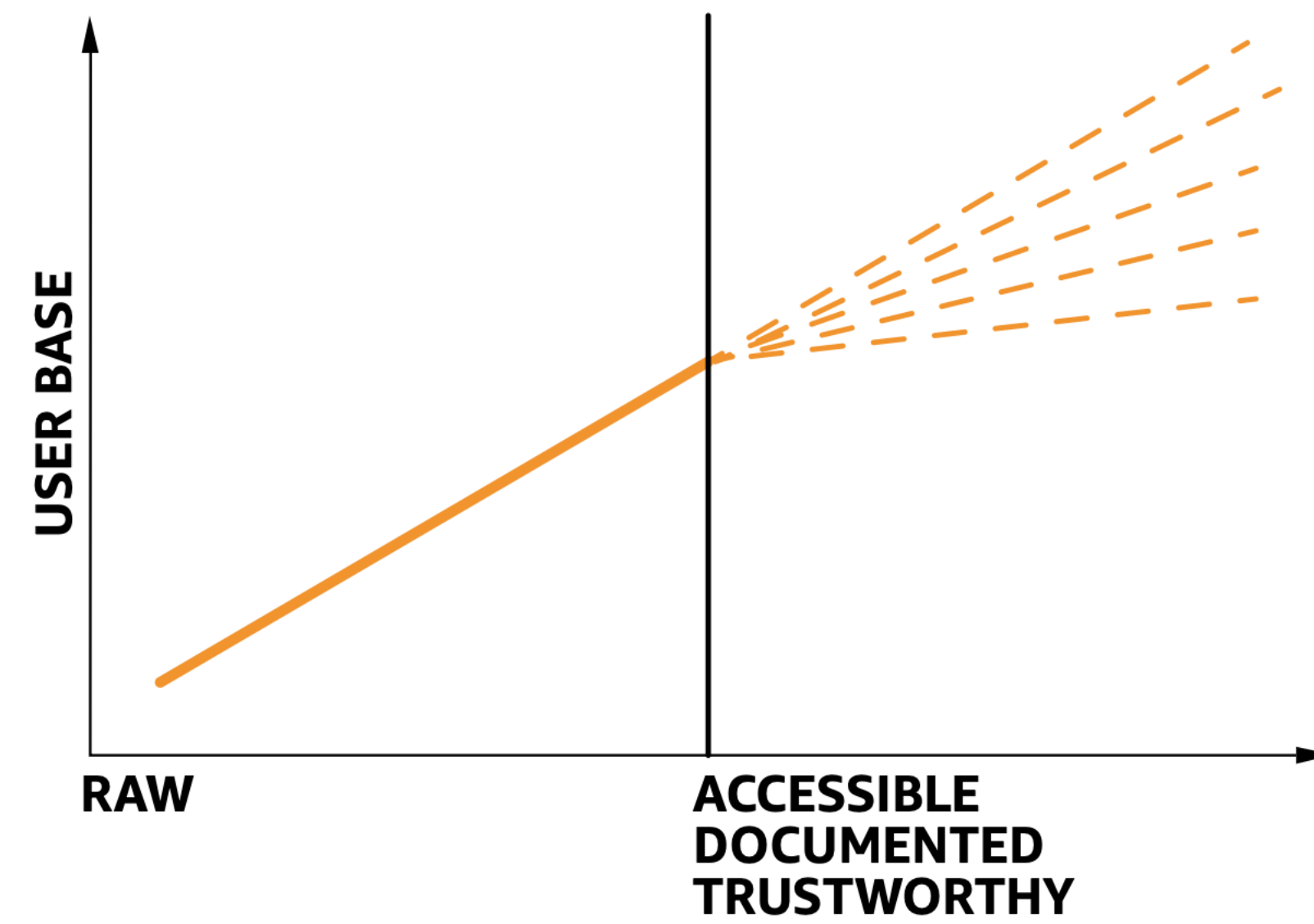
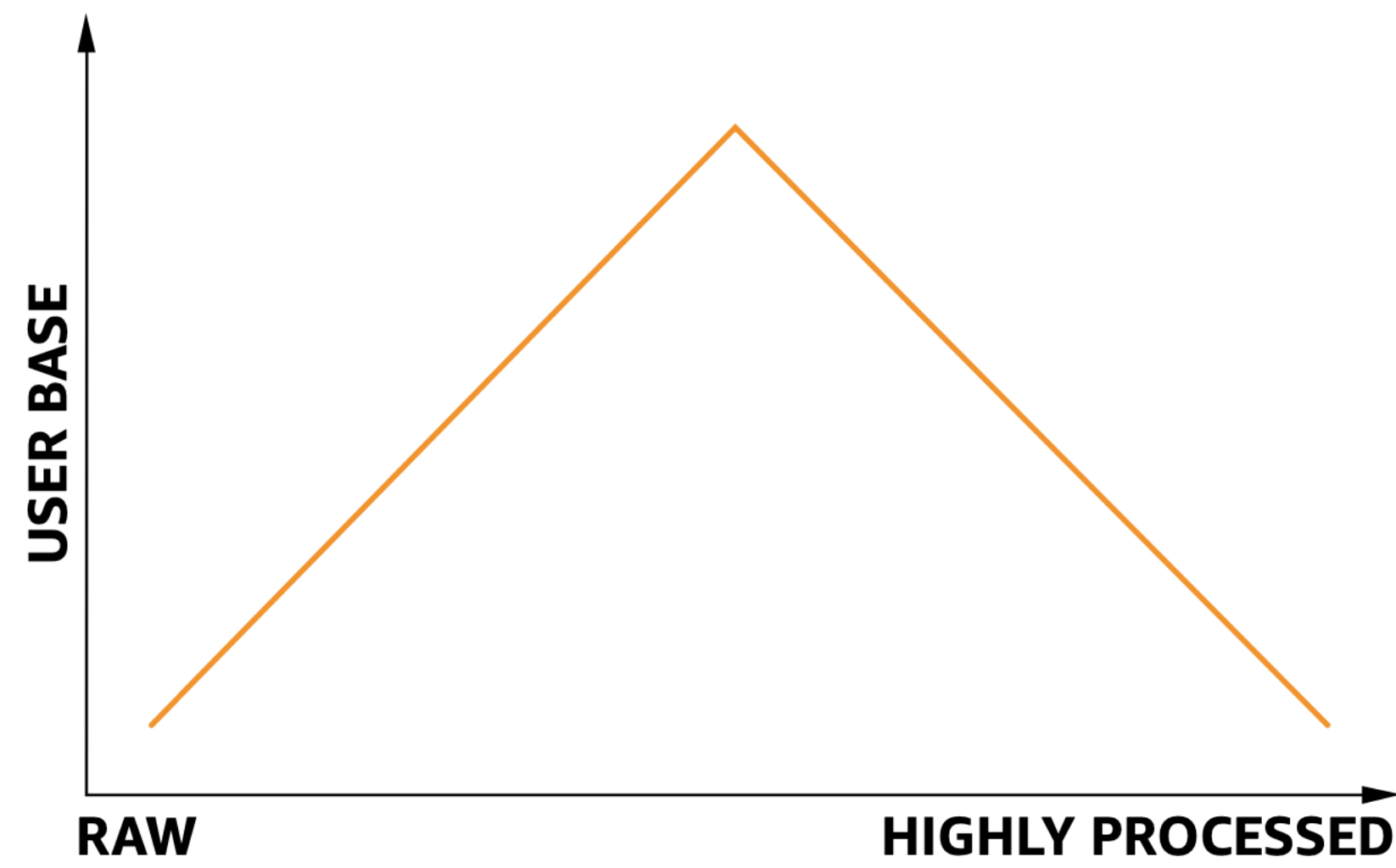
Why big financial firms are scooping up climate modeling companies

Axios, January 2022

Smiling curve 😊



<https://terrawatchspace.com/>



<https://opendata.aws/guide-pdf>

Source Cooperative is a data publishing utility from Radiant Earth that allows trusted organizations to publish data products using standard HTTP methods.

- Allows organizations to publish data without creating their own data portal – only paying based on the volume of data they need to publish with no lock in.
- Data can be published under any license terms chosen by the data provider. Providers can also charge for access.
- Each publicly-listed data product is search engine optimized to enable discoverability.
- Standard HTTP methods ensures that data is usable with a wide array of analytical tools anywhere in the world.
- Can host any type of data, but is “standards aware.”

Funders include:



Beta users wanted!

The screenshot shows the Source Cooperative website interface. At the top, there are navigation buttons for 'BROWSE REPOSITORIES', 'SOURCE COOPERATIVE', and 'SIGN IN / REGISTER'. The main content area lists several data repositories:

- Overture Open Buildings** (Featured): Overture provides several open datasets. This is an experimental re-distribution of their buildings dataset transformed into with 'Cloud-Native Geospatial' formats (PMTiles, GeoParquet). Provided By @cholmes • Published on July 28, 2023. Tags: building footprints, vector, geoparquet, pmtiles.
- CSU Synthetic Attribution Benchmark Dataset**: This is a synthetic dataset that can be used by users that are interested in benchmarking methods of explainable artificial intelligence (XAI) for geoscientific applications. Provided By @csu • Published on July 05, 2023. Tags: synthetic data, xai, regression, attribution benchmark.
- OpenStreetMap Open Data Products**: Distributions of OpenStreetMap vector geodata in cloud-native formats. Provided By @protomaps • Published on August 09, 2023. Tags: openstreetmap, vector, pmtiles.
- GLanCE: A Global Land Cover Training Dataset from 1984 to 2020**: The GLanCE global database contains nearly 2 million training units spanning the period from 1984 to 2020 for seven primary and twelve secondary land cover classes. The database is medium spatial resolution (30 m), geographically and spectrally representative of all global ecoregions, and contains u... [View More]. Provided By @boston-university • Published on July 28, 2023. Tags: land cover, landsat 8, agriculture, vector, geoparquet.
- SEN12TS: A SAR and Multispectral Dataset for Land Cover Classification**: The SEN12TS dataset contains Sentinel-1, Sentinel-2, and labeled land cover image triplets over six agro-ecologically diverse areas of interest: California, Iowa, Catalonia, Ethiopia, Uganda, and Sumatra. Using the Descartes Labs geospatial analytics platform, 246,400 triplets are produced at 10m re... [View More]. Provided By @sen12ts • Published on July 05, 2023. Tags: sentinel-1, sentinel-2, segmentation, land cover.

https://source.coop/

We need new Internet-native 21st century institutions to address global challenges. **They will look nothing like 20th century institutions.**





Thank you!

Jed Sundwall, Executive Director

jed@radiant.earth