



**NOAA**

# GeoGov Summit: Addressing Climate Change & Achieving Climate Resilience

Kim Valentine, NOAA Geospatial Information Officer



# Geospatial is in our DNA



*Geospatial data & technologies provide the framework to collect, store, analyze, and disseminate 'NOAA's Environmental Intelligence'*



# NOAA's Geospatial Framework

Weather and Climate



Imagery and Satellites



While the U.S. is experiencing increasingly frequent and severe extreme weather, water, ocean, and climate events – extreme heat, drought, wildfires, severe storms, and coastal/inland flooding – low-income communities and communities of color are often disproportionately impacted by these disasters.

Nautical Charts and Shoreline



Bathymetry and Coastal Elevation



Coastal Ecosystems



Fisheries Management



Geodetic Control



# Enabling Access to Authoritative Geospatial Data



<https://noaa.maps.arcgis.com>

- *Real-time weather data*
- *Climate data*
- *Navigational charts*
- *Tides, currents, and water-level observations*
- *U.S. shoreline data*
- *NOAA satellite data*
- *Observational data*
- *Emergency response imagery*
- *More.....*



# Enabling Access to Authoritative ... Climate Data



<https://resilience.climate.gov>



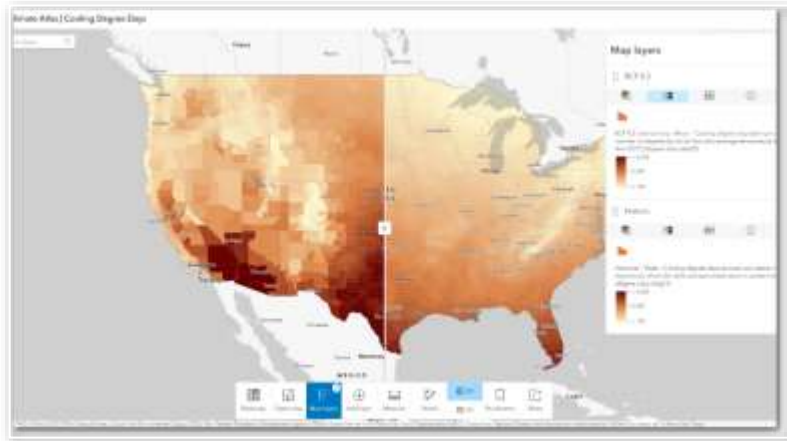
## Climate Mapping for Resilience & Adaptation (CMRA)

- **Redesign - Improved geographies for Tribal data**
- **Enhance CMRA Assessment Tool**
  - Updated projections for LOCA2 & STAR
  - Improved delivery of BCAT & CJEST data
- **Enhance Real-Time Hazards Dashboard**
  - Add "Extreme Cold"

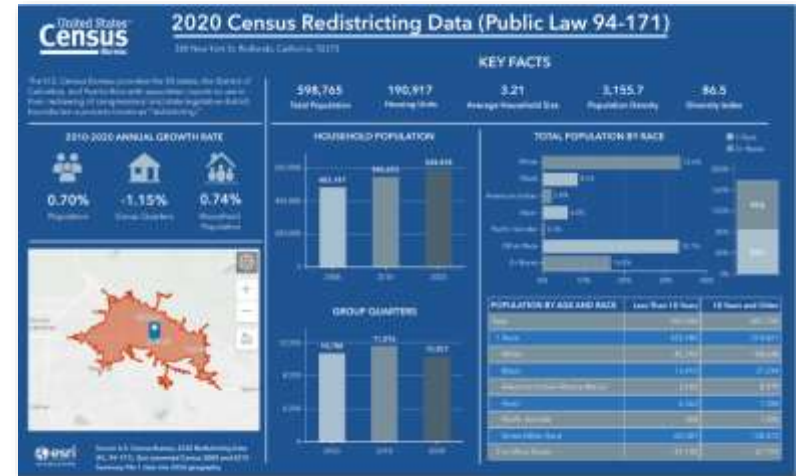


# Enabling Access to Authoritative ... Climate Data

## 5th National Climate Assessment Interactive Atlas



Interactive web application providing access to a curated collection of all maps and data layers featured in NCA5.



Users can enter a zip code and get a report with graphs & infographics summarizing NCA5 data at the county level, with plain language (“Mad Lib”) interpretations of the info for their location.



# GeoGov Summit - Climate Deep Dive Panel



**MODERATOR**

**Kim Valentine**

National Oceanic &  
Atmospheric  
Administration  
(NOAA)



**Brandon Palin**

Sr. Director - Public  
Sector  
Ecopia



**Barbara Ryan**

Executive Director  
World Geospatial  
Industry Council (WGIC)



**Shawana Johnson**

CEO  
Global Geospatial  
Insights



**Julian Reyes**

Assistant Director  
for Climate Services  
(EOP/OSTP) and Deputy  
Director for Services  
(USGCRP)



**Judy Lai-Norling**

COO  
Carbon Mapper



**Nancy Colleton**

President  
Institute for Global  
Environmental Strategies



**Allison Crimmins**

Director  
U.S. Global Change  
Research Program



**David Herring**

Communication,  
Education, &  
Engagement Division



**Pat Cummins**

Director, Government  
Strategy and Policy  
Solutions



**Don Berchoff**

CEO  
TruWeather Solutions

